

Mathematics CFA Template

Pre-Instruction

1. List the Standard. Underline the nouns (what students will know) and highlight the verbs (what student will do):

2. MD.7 *Tell* and *write* time from analog and digital clocks to the nearest 5 minutes using pm and am.

2. Mathematical Practices

1. Make sense of problems and persevere in solving them.
2. Construct viable arguments and critique the reasoning of others.
3. Model with mathematics
4. Use appropriate tools strategically.
5. Attend to precision
6. Look for and express regularity in repeated reasoning

3. I Can Statements – Put learning targets in student friendly terms.

1. I can tell and write time to the nearest 5 minutes using an analog clock.
2. I can tell and write time to the nearest 5 minutes using a digital clock.
3. I can distinguish between am and pm.

Depth of Knowledge of the standard (Highlight the Level of the Learning Target):

Level 1 Recall; Level 2 – Skill/Concept; Level 3 – Strategic Thinking; Level 4 – Extended Thinking

4. List the skills students need to know in order to begin this standard:

1. Level 1 students must know and recognize their numbers.
2. Students must know the difference between an analog and digital clock.
3. Students must know how to count by 5's.
4. Students must know the difference between the hour hand and the minute hand.
5. Vocabulary - clocks, minute, digital, analog, am, pm.

5. What type of assessment am I going to write? [selected response (m/c, t/f, y/n, matching, fill in ___) **or** constructed response (**short:** word, phrase, sentence, single problem; **extended:** multi-step operations in math, problem solving)] List the assessment questions.

Selected Response - MC TF YN and matching

1. What time does this clock show?
2. Fill in the circle next to the clock that shows 2:05.....1:20.....8:40, etc.
3. Would you eat breakfast at 9:00 am or 9 pm.?
4. Write the time shown on the digital clock.
5. Write the time shown on the analog clock..

6. Scoring Guide

Exceeds Expectations: Students answer 6 out of 6 correctly

Proficient: Students answer 5/6 correctly

Approaching Proficiency: Students who answer 4/6 correctly

Not Proficient: Students who answer less than 4 correctly

Name: _____

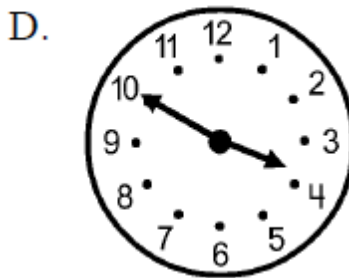
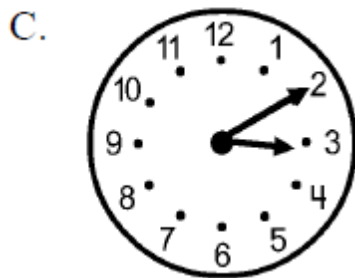
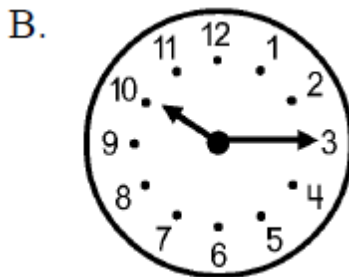
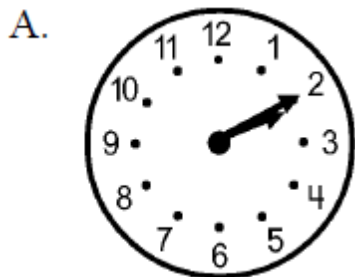
2.MD.7 CFA

Directions:

1. Write the time shown on the clock below.

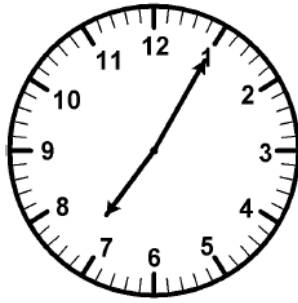


2. Circle the clock that shows 3:10

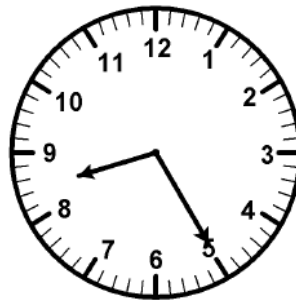


3. Circle the clock that shows 8:05.

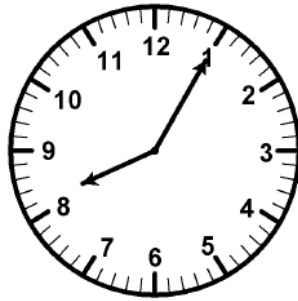
A.



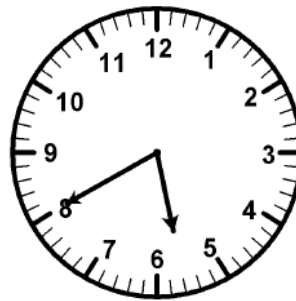
B.



C.

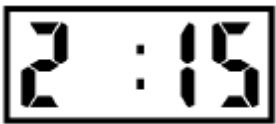


D.



3. Would you eat breakfast at 9:00 am or 9 pm.?

4. Write the time shown on the digital clock.



5. Write the time shown on the analog clock..

